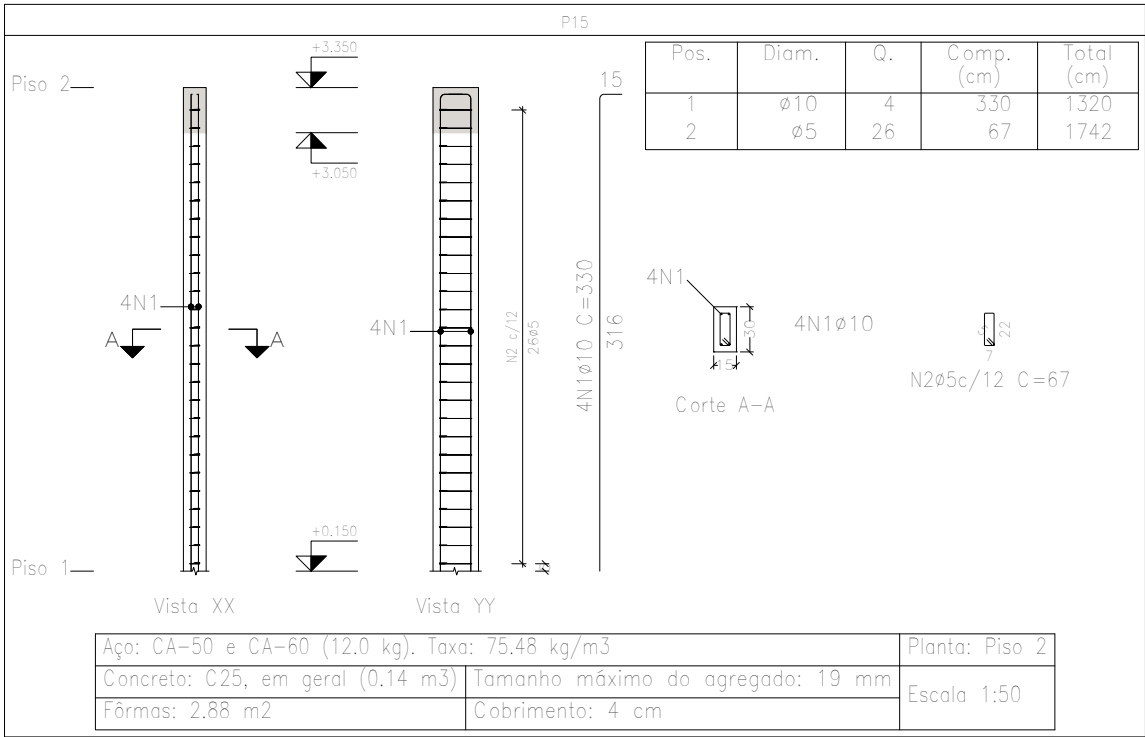
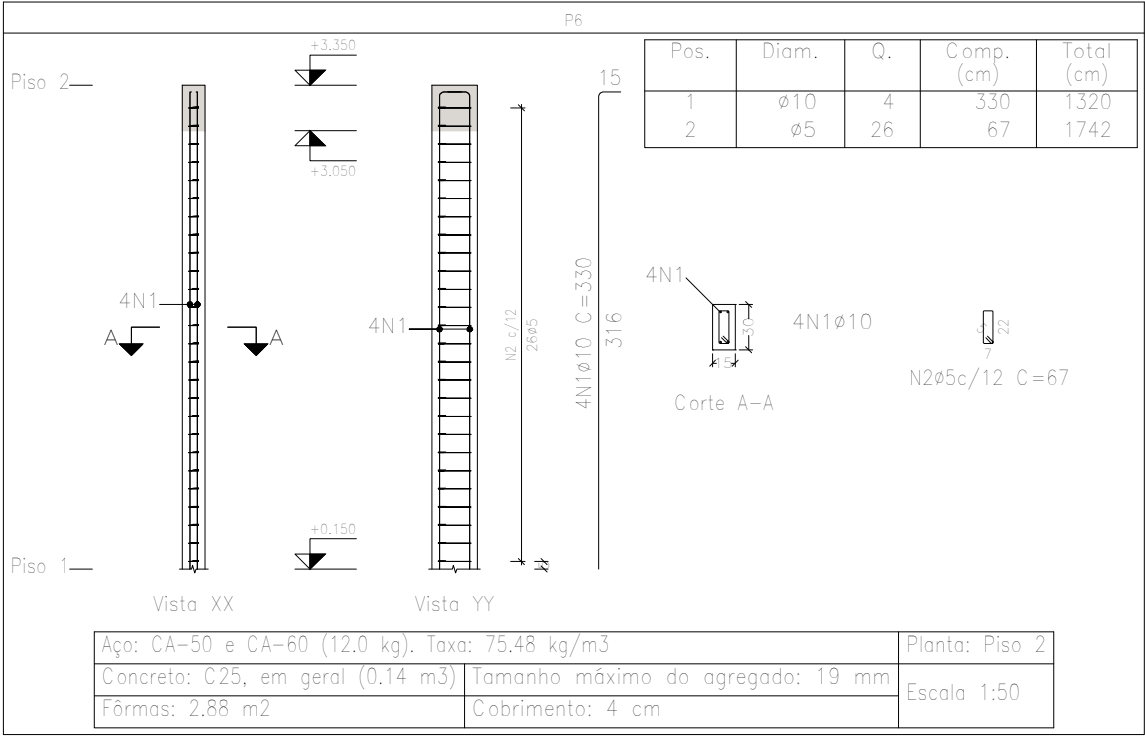
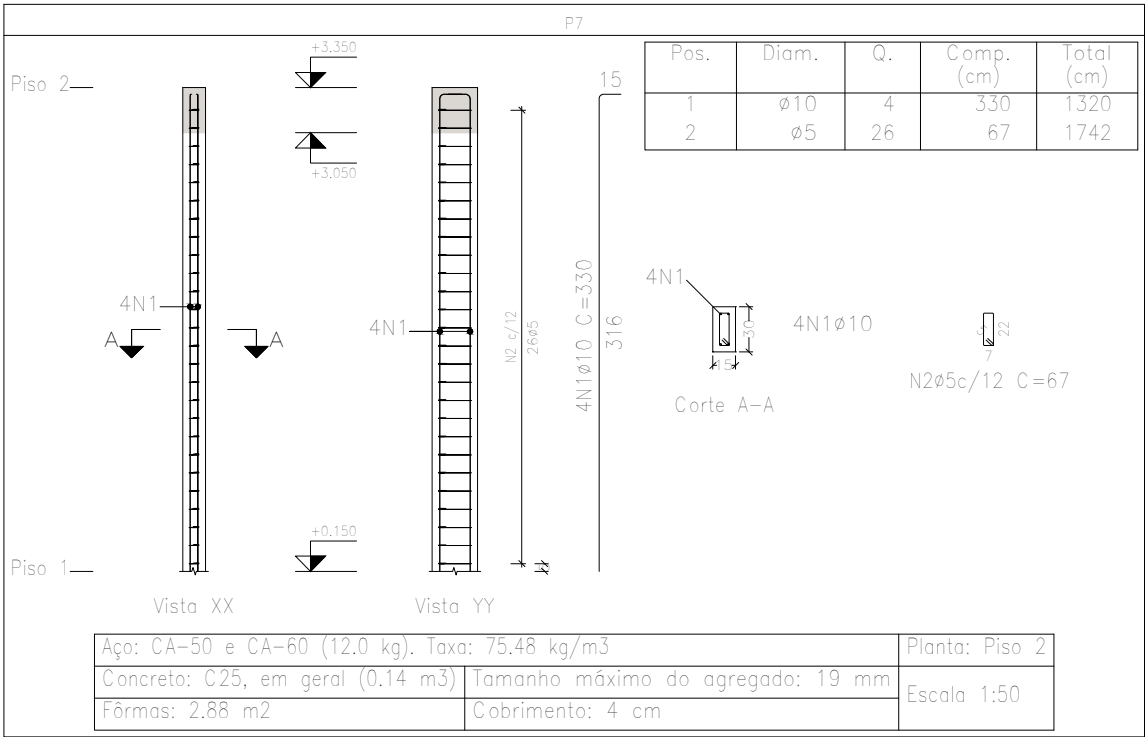
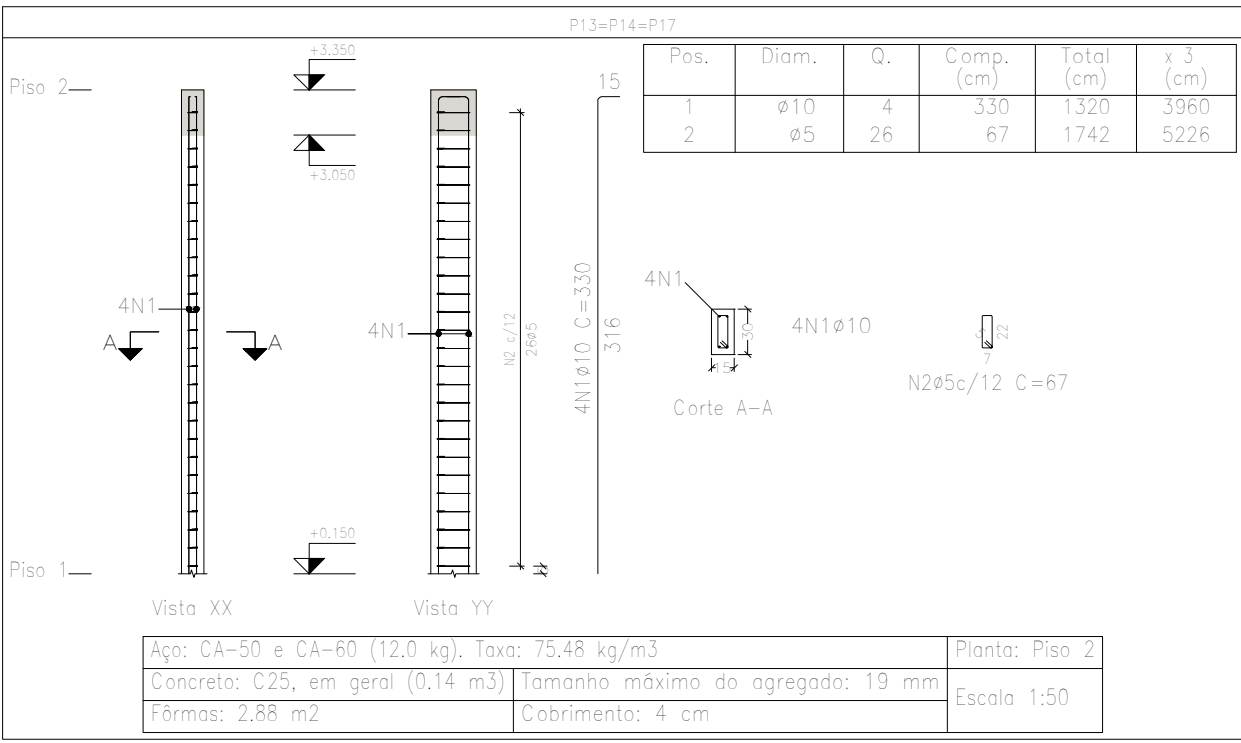
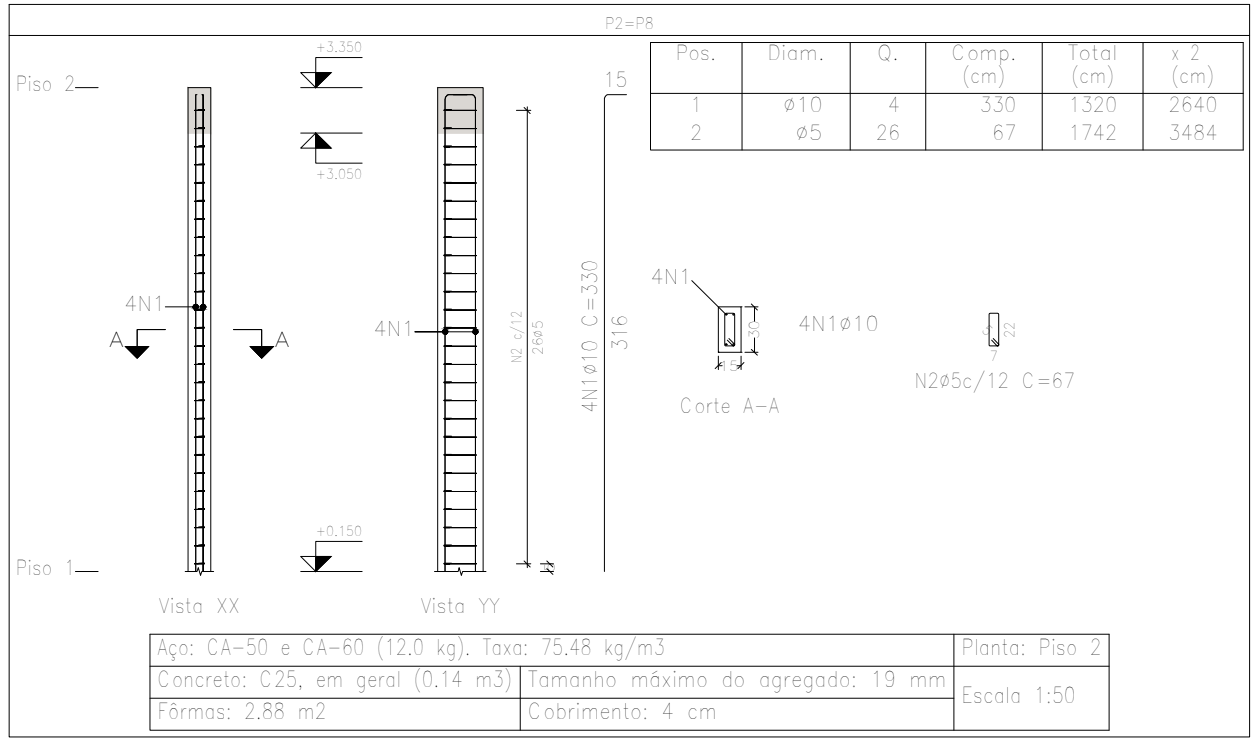


Resumo Aço Pilares	Comp. total (m)	Peso+10% (kg)	Total
CA-50 ø10	244,8	166	166
CA-60 ø5	313,6	54	54
Total			220

Elemento	Pos.	Diam.	Q.	Esquema (cm)	Comp. (cm)	Total (cm)	CA-50 (kg)	CA-60 (kg)
P1=P16	1	ø10	4		330	1320	8,1	
	2	ø5	26		67	1742		2,7
	Total+10% (x2):						8,9	3,0
P2=P8	1	ø10	4		330	1320	8,1	
	2	ø5	26		67	1742		2,7
	Total+10% (x2):						8,9	3,0
P3=P4=P5=P9=P10 P11	1	ø10	4		360	1440	8,9	
	2	ø5	26		67	1742		2,7
	Total+10% (x6):						9,8	3,0
P6	1	ø10	4		330	1320	8,1	
	2	ø5	26		67	1742		2,7
	Total+10%:						8,9	3,0
P18	1	ø10	4		330	1320	8,1	
	2	ø5	26		67	1742		2,7
	Total+10%:						8,9	3,0
P7	1	ø10	4		330	1320	8,1	
	2	ø5	26		67	1742		2,7
	Total+10%:						8,9	3,0
P12	1	ø10	4		330	1320	8,1	
	2	ø5	26		67	1742		2,7
	Total+10%:						8,9	3,0
P13=P14=P17	1	ø10	4		330	1320	8,1	
	2	ø5	26		67	1742		2,7
	Total+10% (x3):						8,9	3,0
P15	1	ø10	4		330	1320	8,1	
	2	ø5	26		67	1742		2,7
	Total+10%:						8,9	3,0
						ø5:	0,0	
						ø10:	165,6	
						Total:	165,6	



Ampliação Transbordo		Data:
		07/02/2024
Local:		Número de desenho:
Transbordo Municipal		
Promotor:		
Projeto Estrutural		Escala:
		Indicada
Eduardo Rampanelli Tosetto Engenheiro Civil Número de CREA: 1220503037		Data:
		07/02/2024